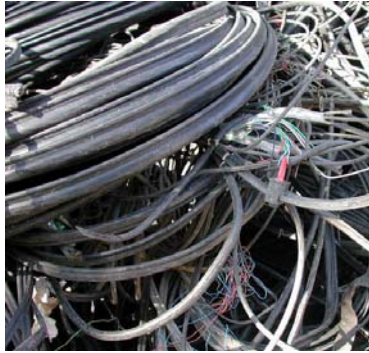


WIRE GRANULATOR AND SEPARATOR

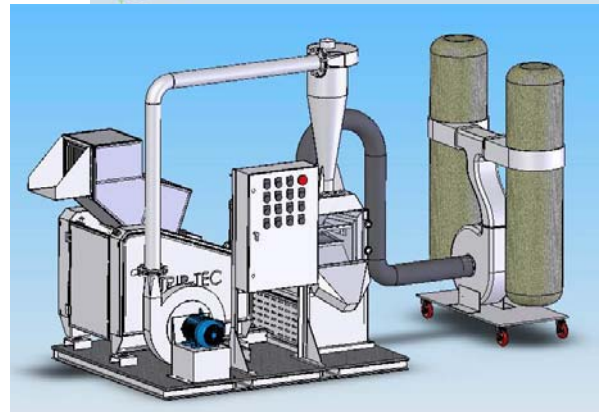
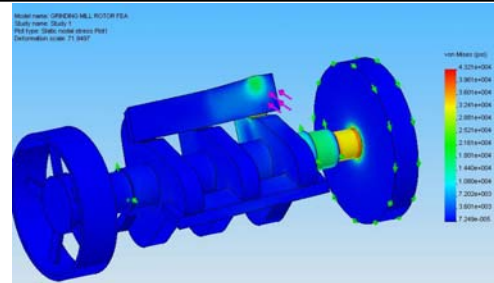
PROJECT DESCRIPTION



A CLIENT ASKED ME TO DEVELOP A WIRE GRANULATOR AND SEPARATOR MACHINE THAT WAS CAPABLE OF GRANULATING INDUSTRIAL CABLE AND WIRE, TRANSFERRING THE PRODUCT TO A SHAKER TABLE, AND SEPARATING THE CONDUCTOR FROM THE WASTE BYPRODUCT. THE TARGET MARKET FOR THE MACHINE IS THE RECYCLING INDUSTRY WHOSE FOCUS IS RECLAMATION OF COPPER AND ALUMINUM FROM CABLE AND WIRE.

DESIGN NOTES

- THE GRANULATOR WAS DESIGNED AROUND A THREE-BLADE CUTTER, POWERED BY EITHER A 20 OR 30 HP ELECTRIC MOTOR.
- A PNEUMATIC CONVEYOR WAS SELECTED TO MOVE THE PRODUCT FROM THE GRANULATOR INTO THE SEPARATOR.
- A CONVEYOR TUBE AND CYCLONE WERE DESIGNED TO TRANSFER THE GRANULATED PRODUCT TO THE SEPARATOR.
- THE SEPARATOR WAS DESIGNED USING A SHAKER TABLE AND PNEUMATIC BLOWER TO SORT THE METAL PRODUCT FROM THE PLASTIC SHEATHING AND OTHER BYPRODUCT.
- THE UNIT CAN GRANULATE AND SEPARATE APPROXIMATELY 2100 CUBIC FEET OF WIRE AND CABLE PER HOUR, PRODUCING BETWEEN 350 AND 800 LBS OF PRODUCT PER HOUR.
- BOTH TRADITIONAL DESIGN TECHNIQUES AND FINITE ELEMENT ANALYSIS WERE USED IN THE DESIGN AND SIZING OF THE VARIOUS COMPONENTS FOR THE SYSTEM.



PROJECT SUMMARY



THE PROJECT WAS SUCCESSFULLY COMPLETED IN NOVEMBER OF 2006 AND A NUMBER OF SYSTEMS HAVE BEEN SOLD AND SHIPPED TO FACILITIES ACROSS THE UNITED STATES.

WEBSITE: WWW.TEAM-IMS.COM
TEL: 877-693-7467
FAX: 888-316-0763
EMAIL: SALES@TEAM-IMS.COM