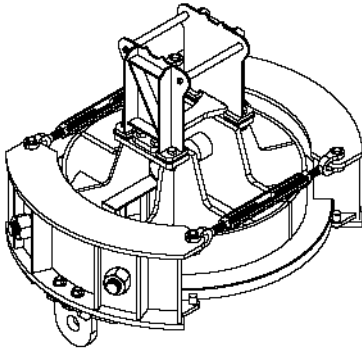


CUSTOM CAM FOLLOWER

PROJECT DESCRIPTION

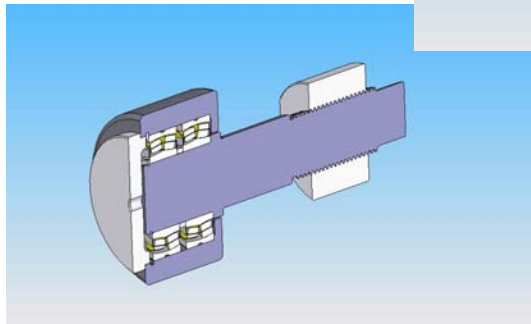
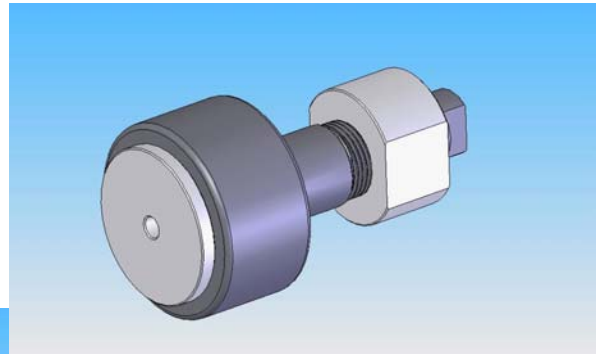


A CLIENT RECEIVED A CONTRACT TO FABRICATE A PRE-DESIGNED ROTATING MILLSTONE TO BE USED FOR A ONE-TIME LIFT. THE MILLSTONE HAD BEEN DESIGNED WITH CATALOG CAM FOLLOWERS. LEAD TIMES AND COST OF THE CATALOG CAM FOLLOWERS WERE BEYOND THE SCOPE OF THE PROJECT, SO I WAS ASKED TO DESIGN A CAM FOLLOWER FOR THE APPLICATION THAT COULD BE QUICKLY AND EASILY MANUFACTURED. THE REQUIREMENTS OF THE PROJECT INCLUDED:

- THE CAM FOLLOWER MUST HAVE A 9 INCH DIAMETER AND BE ABLE TO INTERCHANGE DIRECTLY WITH THE CATALOG CAM FOLLOWER.
- FOUR CAM FOLLOWERS MUST SUPPORT A TOTAL LOAD OF 115 TONS.

DESIGN NOTES

- THE CAM FOLLOWER WAS DESIGNED TO CARRY A RADIAL LOAD OF 77,000 LBF AT THE ROLLER.
- TWO STANDARD, DOUBLE ROW SPHERICAL BEARINGS WERE SELECTED TO SUPPORT THE ROLLER.
- THE CENTER SUPPORT SHAFT WAS DESIGNED FROM HEAT TREATED ALLOY STEEL.
- THE ASSEMBLY WAS DESIGNED AS A DIRECT INTERCHANGE TO THE CATALOG CAM FOLLOWER.



PROJECT SUMMARY



THE PROJECT WAS SUCCESSFULLY COMPLETED IN AUGUST OF 2006. SOME OF THE PROJECT HIGHLIGHTS INCLUDE:

- FOUR CAM FOLLOWERS WERE MANUFACTURED AND ASSEMBLED IN THE FABRICATED MILLSTONE.
- THE MILLSTONE ASSEMBLY WAS DELIVERED TO THE CUSTOMER IN SEPTEMBER OF 2006 AND SUCCESSFULLY USED TO LIFT THE 115 TON LOAD.

WEBSITE: WWW.TEAM-IMS.COM
TEL: 877-693-7467
FAX: 888-316-0763
EMAIL: SALES@TEAM-IMS.COM